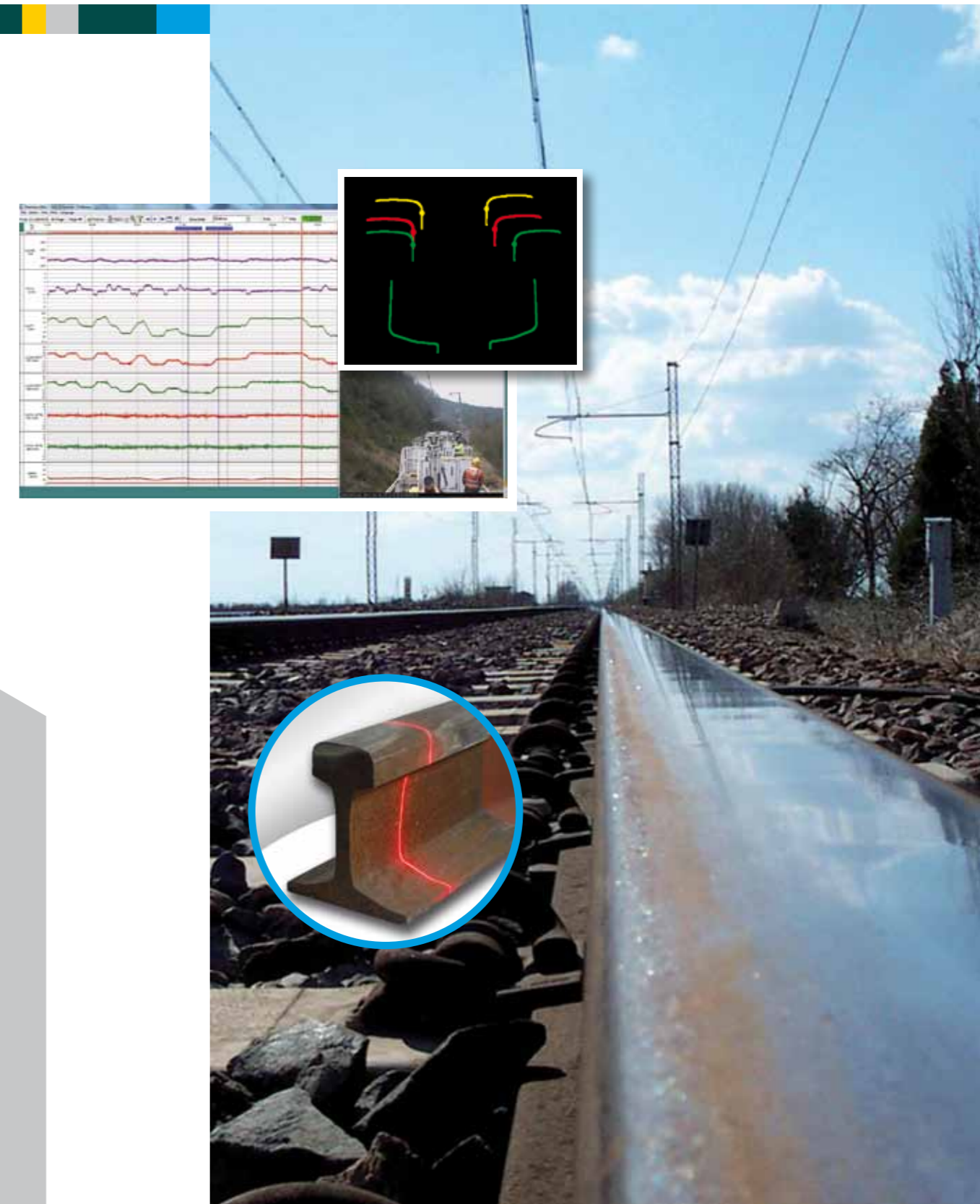


# measuring TRACKS

Devices for Track Inspection, Diagnostic and Measurements

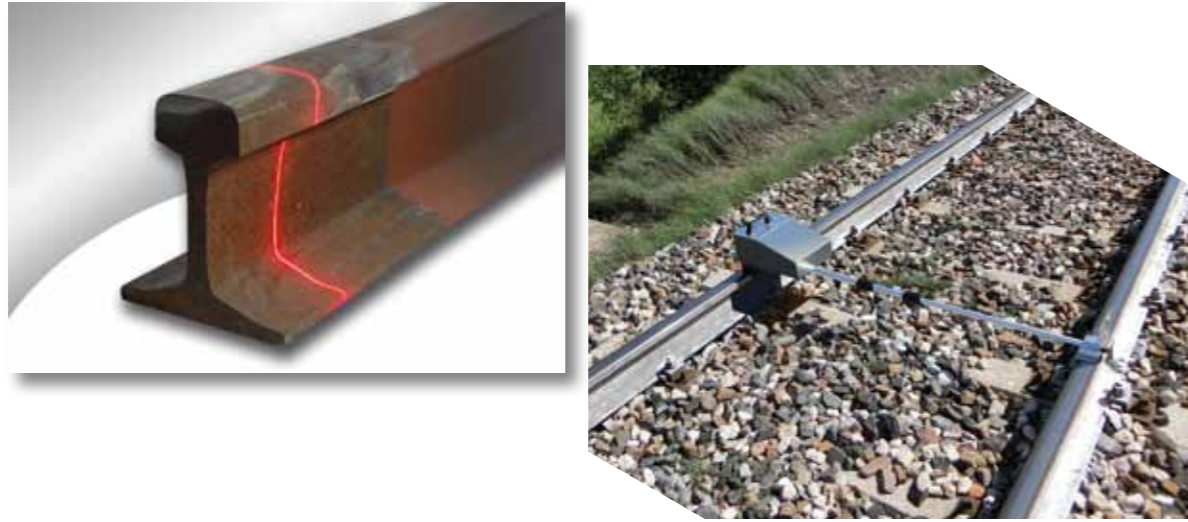
	<b>Track-P1</b>	<b>Track-T2</b>	<b>Track-V2</b>	<b>Track-V6</b>
	Portable 1 laser scanner	on manual Trolley 2 lasers scanner	on Vehicle 2 lasers scanner	on Vehicle 6 lasers scanner
Gauge	●	●	●	●
Twist				●
Cant level				●
Alignment left & right				●
Longitudinal level left & right				●
Track profile	●	●	●	●
Horizontal wear	●	●	●	●
Vertical wear	●	●	●	●
45° wear	●	●	●	●
GPS position	●	●	●	●
Kilometric chainage		●	●	●
Video of tracks		●	●	●
Video of Panorama		●	●	●
Accelerometers			●	●
Excel exportation	●	●	●	●
Pole's position and distance from tracks	●	●	●	●

● = included    ● = optional



# Four solutions for measuring your tracks

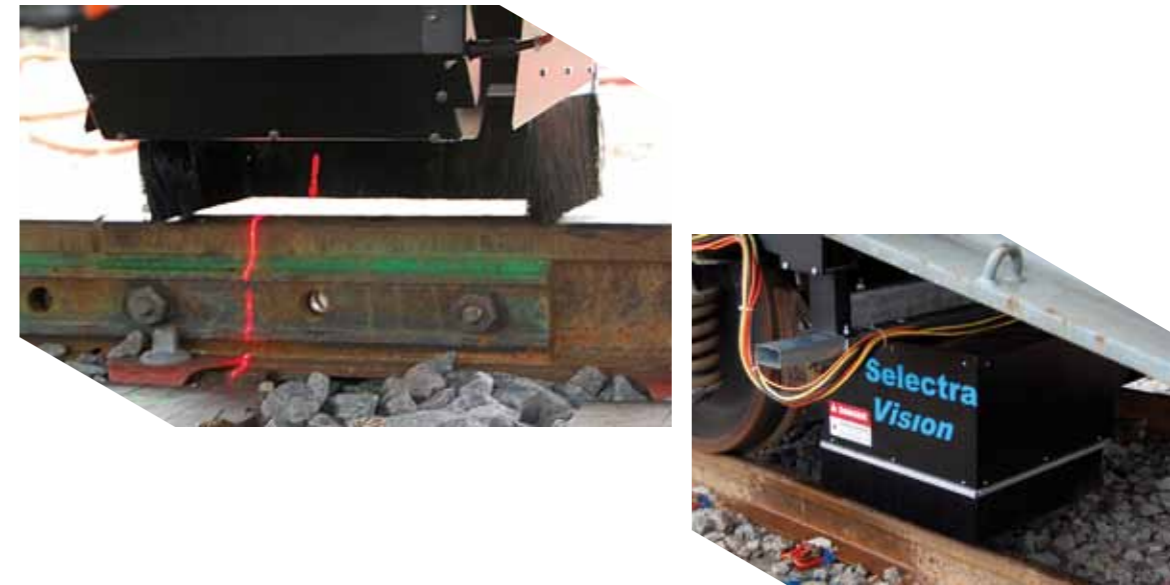
## Portable 1 laser



### Track-P1

Portable device for measuring the profiles and gauge parameters of tracks by lasers

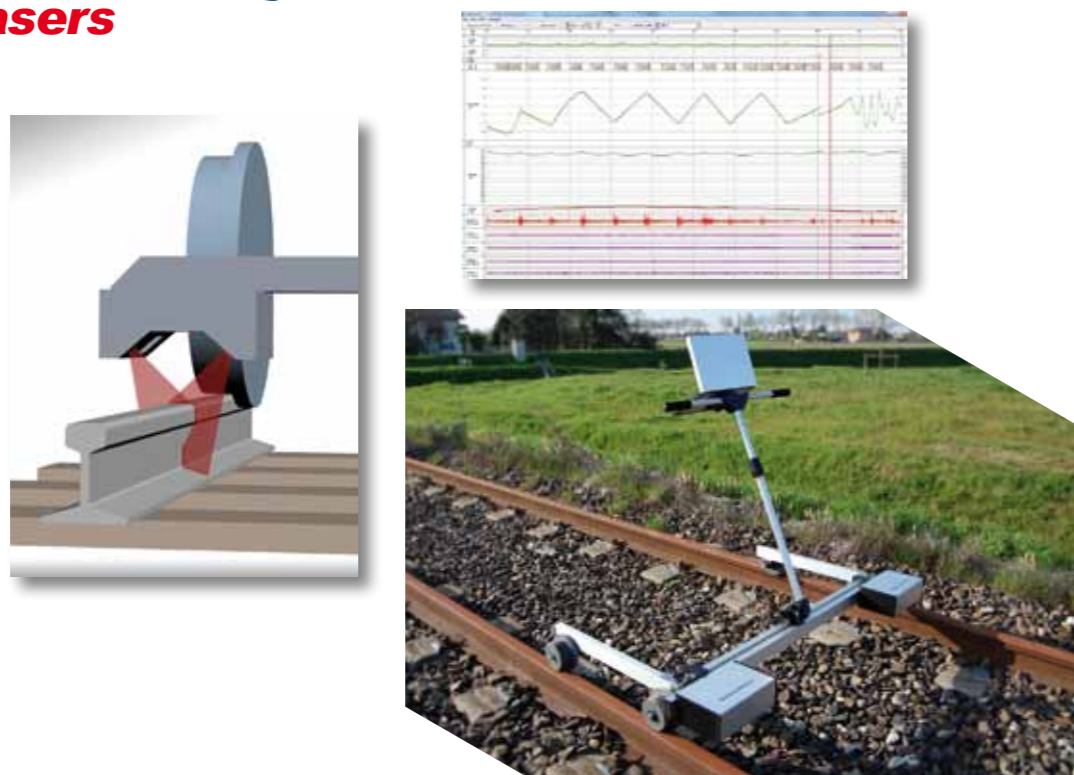
## on Vehicle 2 lasers



### Track-V2

Two lasers equipment installable on every rail vehicle, for measuring the profiles and the geometrical parameters of tracks

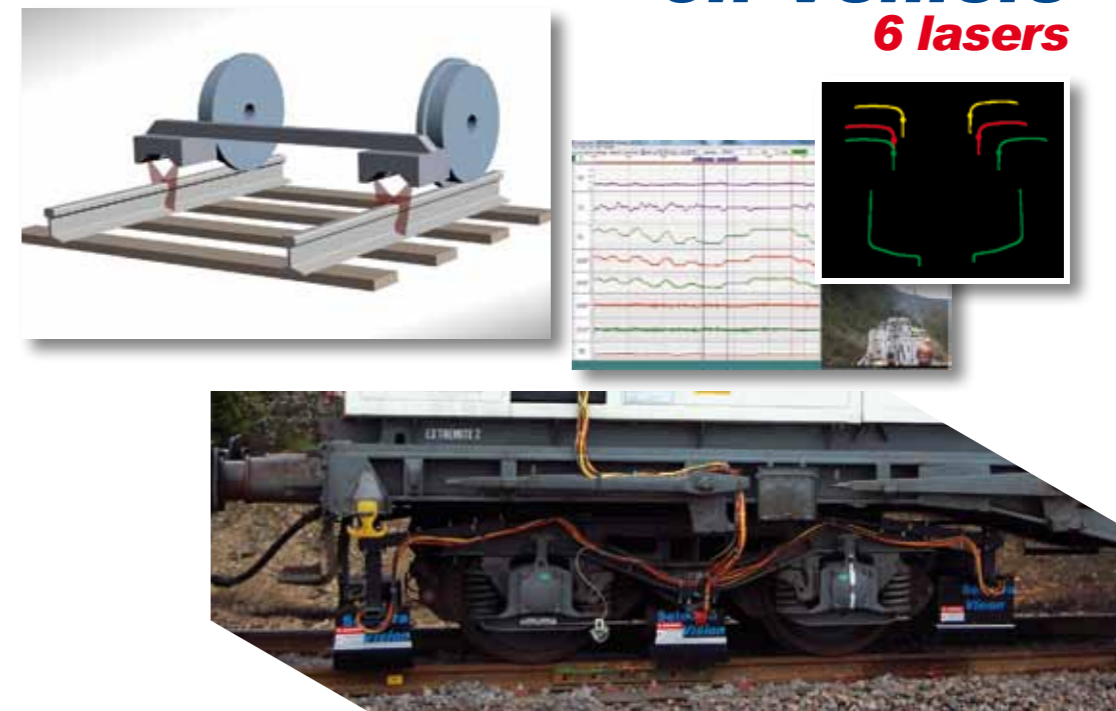
## on Trolley 2 lasers



### Track-T2

Portable trolley for measuring the profiles, gauge and geometrical parameters of tracks by lasers

## on Vehicle 6 lasers



### Track-V6

Six lasers equipment installable on every rail vehicle, for measuring the profiles and the geometrical parameters of tracks