

**ROGRIND****13.45 MD E<sup>3</sup>****Welding Joint Grinding Machine****PRECISE GRINDING  
COMPLETE  
REPROFILING.**

ROGRIND 13.45 MD - 5159900079  
ROBATTERY 71.02 - 7836800001

**For grinding welding joints and for reprofiling the complete rail head.  
Can also be used in switches and for grinding grooved rails and crane rails.**

### THE ADVANTAGES. YOUR BENEFITS.

#### Simple and practical.

- Choice between battery power or power pack
- Interchangeable guiding system for various applications
- Easy changing of cup wheel thanks to Quick Lock
- Non-projecting carrying handles allow for easy transport and easy storage
- LED lighting
- Ideal for use in tunnels and urban areas

#### Light-weight machine. Powerful grinding.

- The most powerful electric motor in its weight class for fast grinding
- No set-up time
- Rotational resistance can be adjusted at spindle hand wheel as required, without the use of any tools
- Grinding throughput: at least 60 minutes of continuous grinding (depending on rail profile, trimmer, grinding wheel etc.)

### TECHNICAL SPECIFICATIONS

Drive	BLDC electric motor
Output	6.6 kW
Weights	
Machine	from 40 kg
Battery	from 16 kg
Power supply	18 kg
Copy roller spacing	850 mm
Dimensions (L x W x H)	1036 x 500 x 900 mm

## ACCESSORIES

- 7836800001 Battery 2300 Wh
- 7879900001 Charger for battery 2300 Wh
- 5039900003 Power supply 400 Volt

### Guiding systems

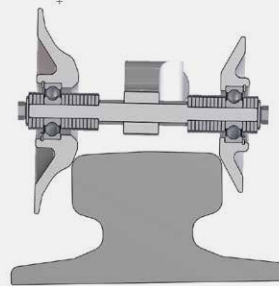
- 5150220050V Standard guiding system
- 5150200056 Universal guiding system
- 5150850003 Crane rail machining system (up to rail head width 120 mm)
- 5158930001 Multiroller carrier (2 required)
- 5158931002 Extension arm for frog noses

### Carrying handles

- 5158930005 Outside carrying handle

### Cup wheels

- 9002000687 Cup wheel 125 mm, M20 central holder
- 9878081000 Cup wheel 90 mm conical, M20 central holder
- 9002000330 Cup wheel 90 mm cylindrical, M20 central holder
- 9002003605 Cup wheel 125 mm, 5/8" central holder
- 9000200182 Steel wire brush 90 mm, M20 central holder
- 8931002007 Centring nut for steel wire brush 90 mm



5150850003

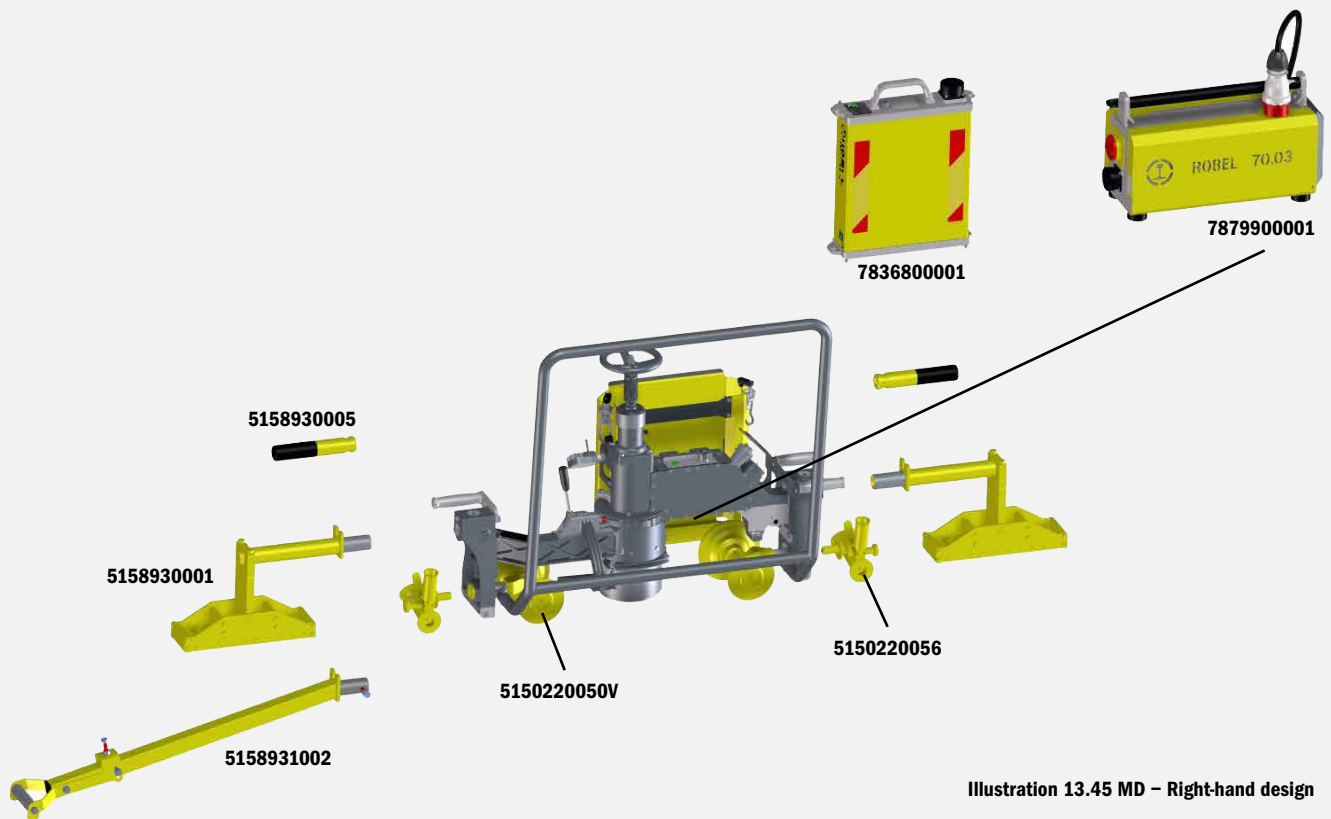


Illustration 13.45 MD – Right-hand design

**Do you require a different design?  
Please get in touch with your ROBEL contact.**