



Vogel & Plötscher

PART OF **ROBEL**
GROUP

Track measuring devices

Accuracy made in Germany

Track & switch inspection



Track geometry



Rail condition



MessReg CTS II

Maß nehmen.



Vogel & Plötscher's product portfolio includes analogue and digital systems for measuring tracks and switches, rail condition and track geometry.

From the initial idea to the finished product: As a full-service provider with a high level of vertical integration, all components of the measurement technology solutions are realised in-house. Electronics, software and programming are also developed at Vogel & Plötscher. Flexible production structures enable customised solutions as needed.

The result: Highest precision, maximum reliability and efficiency.



Track & switch inspection



RCA

Track gauge and cant measuring device

Approval: DB, SNCF, SŽ

Application: Analogue measuring device for switches and tracks to determine

- track gauge
- cant
- flangeway clearance
- check rail gauge
- back-to-back distance

Additional equipment options available.



RCS

Track gauge and cant measuring device

Approval: DB, SNCF, SŽ

Application: Analogue measuring device for tracks to determine

- track gauge
- cant

Additional equipment options available.



RCFF

Track gauge and cant measuring device

Approval: DB, SŽ

Application: Analogue measuring device for tracks equipped with spring-loaded mechanism and locking block to determine

- track gauge
- cant

Additional equipment options available.



Track & switch inspection



RCAD

Switch gauge and cant measuring device

Approval: DB, SŽ

Application: Digital measuring device for switches and tracks to determine

- track gauge
- cant
- flangeway clearance
- check rail gauge
- back-to-back distance

Optional: Measuring data storage and data transfer via Bluetooth (version RCAD-BT5).

Additional equipment options available.



MessReg PTP II

Switch inspection system

Approval: DB

Application: Digital system with measurements being captured point by point incl. outdoor tablet and evaluation software for switches and tracks to measure

- track gauge
- cant
- flangeway clearance
- check rail gauge
- back-to-back distance
- twist

Optional: Mobile trolley "WeichenCaddy II".

Additional equipment options available.



MessReg CDM

Track and switch inspection system

Approval: DB

Application: Digital and mobile measuring system incl. outdoor notebook and evaluation software for automatic and continuous capture of

- track gauge
- cant
- flangeway clearance
- check rail gauge
- back-to-back distance
- twist
- distance
- flangeway depth (optional)

Additional equipment options available.



HMG

Frog geometry measuring system

Approval: DB

Application: Digital measuring system incl. outdoor notebook and evaluation software to identify and evaluate

- running surface geometry of single (free-standing) frogs



GG 718

Template for stock rail and switch blade

Approval: DB

Application: Analogue device to check the

- wear of the switch blade



MessReg CTS II

Track measuring system

Application: Digital and mobile measuring system incl. outdoor tablet and evaluation software for automatic and continuous capture of

- track gauge
- cant
- twist
- distance

Optional: GPS connection



Rail condition



SKM

Rail head wear measuring device

Approval: DB

Application: Analogue measuring device to check

- rail height
- wear of the running edge



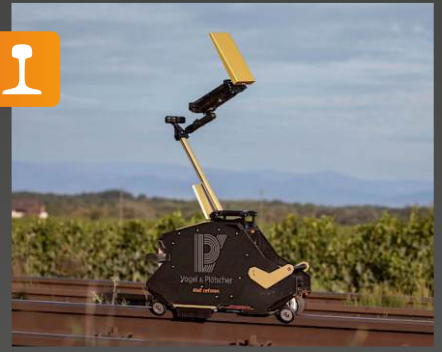
PML

Laser-based transverse profile measuring system

Application: Digital and portable measuring system incl. outdoor tablet and evaluation software to determine

- rail transverse profile
- metal removal

Measuring system and evaluation according to EN 13231-2:2020.



RSCM

Rail surface inspection system

Approval: DB

Application: Digital, mobile inspection system incl. outdoor tablet for detection of rail near-surface defects down to 7 mm, such as

- pitting / metal loss
- rolling contact fatigue (RCF)
- head checks
- squats

Measuring system and evaluation according to EN 61000-6-4:2017 and DB Ril 821.2007V03-36.



RM 1200 D

Longitudinal profile measuring system (portable)

Approval: DB

Application: Digital measuring system incl. outdoor tablet and evaluation software to capture

- rail longitudinal profile (corrugation)
- welding joints

Measuring system and evaluation according to EN 13231-2:2020 and DB Ril 824.8310:2017.



RMF 1100

Longitudinal profile measuring system (mobile)

Approval: DB

Application: Digital measuring system incl. outdoor notebook and software for automatic and continuous capture of

- rail longitudinal profile (corrugation)
- welding joints

Measuring system and evaluation according to EN 13231-2:2020 and DB Ril 824.8310:2017.



RM 150HR

Measuring system for rail surface quality

Approval: DB

Application: Digital and portable measuring system incl. outdoor tablet and evaluation software to determine the

- rail surface quality index [QI]

Measuring system and evaluation according to EN 13231-2:2020.



Track geometry



VIG 1300

Sighting and levelling device

Approval: DB, SNCF

Application: Measuring device with Leica optics

- sighting to determine along-track height
- levelling to determine track height



WM

Measuring bars for versines „Wuppertaler method“

Approval: DB

Application: Analogue device to measure the

- versines



PFIA 1

General-purpose versine measuring device

Application: Analogue measuring device to enable the

- versine measurement inside and outside of a curved track



SQUARE

Track square

Application: Analogue and separable measuring device to support and check the

- alignment of sleepers



POINT

Fixed point measuring device

Application: Analogue measuring device to

- measure the distances between fixed points (i.e. signal post, concrete walls, etc.) to the track
- check individual level values using an appropriate measuring gauge



SA 75

Track clearance measuring device

Application: Analogue measuring device to measure the

- distance from two tracks towards each other
- distance and the height difference from one track to a fixed point



Track geometry



PLAT

Platform distance gauge

Application: Analogue device to measure the

- distances from center of track or inner rail edge to the platform
- height difference from top of rail to the platform edge or to the top of ramps



MUL

Measuring device for lower structure clearance

Application: Analogue device to measure

- the lower structure clearance at bridges and platforms
- frost damages at level crossings



THIRD

Third rail gauge

Application: Analogue device manufactured from non-conductive fiberglass to measure the third rail with the following track parameters

- track gauge
- clearance from third rail to the track
- height difference from the third rail to the track

Integrated measuring technology



ROMILL

Complete solution for rail maintenance

Application: Rail treatment system combining the latest milling, grinding, and measuring technology. Measurements include

- rail transverse profile
- rail longitudinal profile (corrugation)
- rail defects



ROSPECT

Modular inspection platform

Application: Inspection vehicle for automatic

- detection of rail defects via eddy current and ultrasonic
- measurement of
 - rail longitudinal profile (corrugation)
 - track geometry via MessReg IMU (Inertial Measurement Unit)
 - rail transverse profile
 - ground penetration radar



Vogel & Plötscher

PART OF **ROBEL** GROUP

Vogel & Plötscher GmbH & Co. KG
Geldermannstr. 4, D-79206 Breisach
Tel: +49 (0)7667 946100, info@voploe.de/en

For more information:
vogelundploetscher.de/en